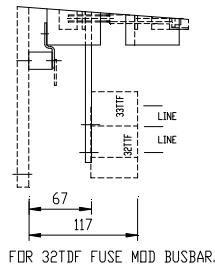


DRG.No.B 020240

POWERSEM LTD.

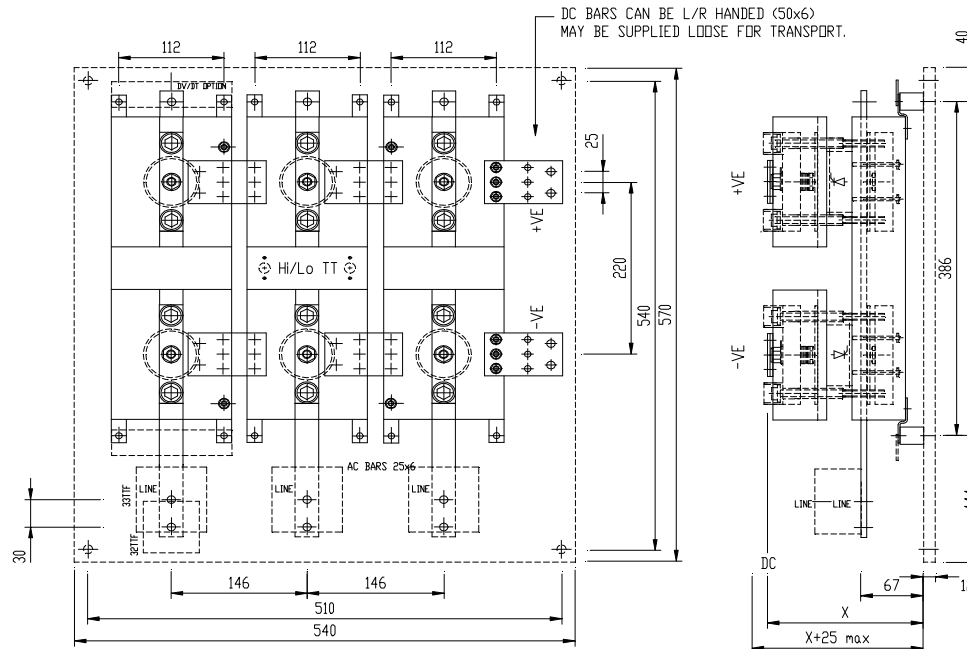
DIM X
 FOR 15mm DEVICES = 155
 FOR 27mm DEVICES = 167

WHEN REAR PANEL OPTION NOT SELECTED.
 PHASES MAY BE SUPPLIED LOOSE FOR TRANSPORTATION
 CUSTOMER FITS DC LINKS & OUTPUTS



FIXINGS M8
 AC/DC CONNECTIONS 2*M8 (FUSE 32TTF M10 / 33TTF M12)
 G/K LEADS 600 mm

BACK PANEL, FUSES, DV/DT, TT ETC OPTIONAL



TOLERANCES UNLESS SPECIFIED UNLIMITED DIMENSIONS TO BE ± 0.2 ANGLES ± 0° 30' HOLES + 0.1 - 0.02	REMOVE SHARP EDGES ALL DIMENSIONS IN MILLIMETRES CHAMFER ALL THREADS AT 45 TO ROOT DIAMETER.	POWERSEM LTD OWNS THE COPYRIGHT OF THIS DRAWING WHICH IS SUPPLIED IN CONFIDENCE AND WHICH MUST NOT BE USED FOR ANY PURPOSE OTHER THAN THAT FOR WHICH IT IS SUPPLIED, AND MUST NOT BE REPRODUCED WITHOUT PERMISSION IN WRITING FROM THE OWNERS. © POWERSEM LTD.	TITLE: B6U/H/C PS185/350/150B		JOB: VAR	
			MATERIAL:		SPEC.	
ASSEMBLY DN:			FINISH:	SCALE 1:5	DRAWN PB	CHK'D MP
ASSEMBLY DN:			MDD. No		DRG.No.B 020240	
THIRD ANGLE PROJECTION			ISSUE No	1/01.02.00		

ASSP-BRLT-008 | LINDSEY PATRICK L. INDEPENDENT | ASSESSOR | 01/01/2014