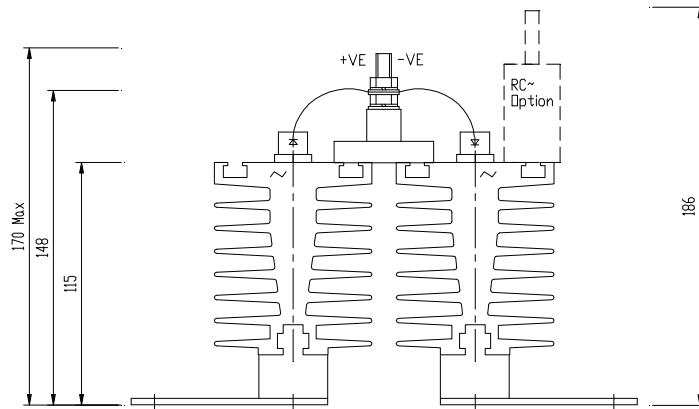
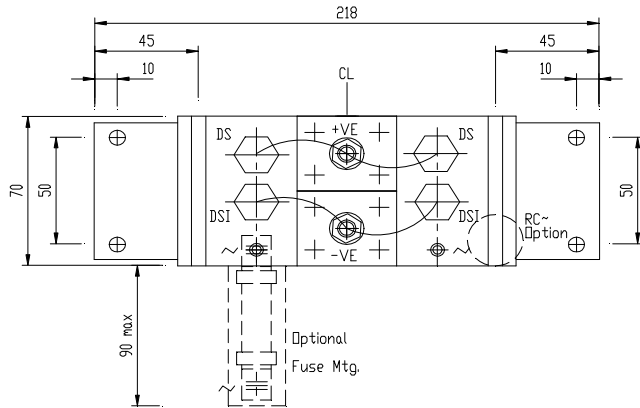


DRG.No.B 020256

POWERSEM LTD.



CONNECTIONS M6  
FIXING 4 x M6 CLEAR

TOLERANCES UNLESS SPECIFIED  
UNLIMITED DIMENSIONS TO BE  $\pm 0.2$   
ANGLES  $\pm 0^\circ - 30^\circ$   
HOLES  $+ 0.1 - 0.02$

REMOVE SHARP EDGES  
ALL DIMENSIONS IN MILLIMETRES  
CHAMFER ALL THREADS AT 45 TO  
ROOT DIAMETER.

POWERSEM LTD OWNS THE COPYRIGHT OF THIS DRAWING WHICH IS  
SUPPLIED IN CONFIDENCE AND WHICH MUST NOT BE USED FOR ANY PURPOSE OTHER THAN  
THAT FOR WHICH IT IS SUPPLIED, AND MUST NOT BE REPRODUCED WITHOUT PERMISSION  
IN WRITING FROM THE OWNERS. © POWERSEM LTD.

TITLE: B2U DS / DSI/xx 2PS156/70B

JOB:

MAT'L:  
FINISH SCALE 1:2

SPEC.  
DRAWN PB CHK'D MP

ASSEMBLY DN  
ASSEMBLY DN

THIRD ANGLE PROJECTION

MOD. No  
ISSUE No

1/22.12.05

DRG.No.B 020256

Vertical line with tick marks and faint text on the left side of the page.