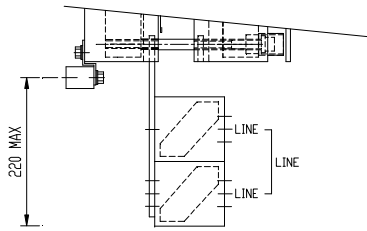
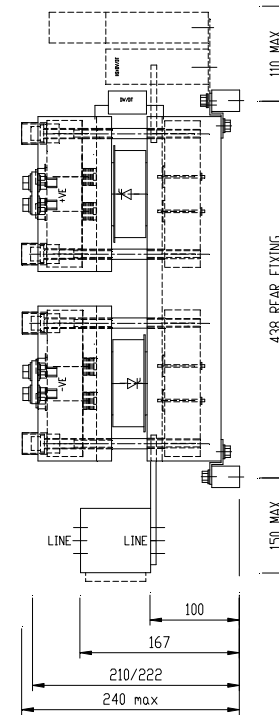
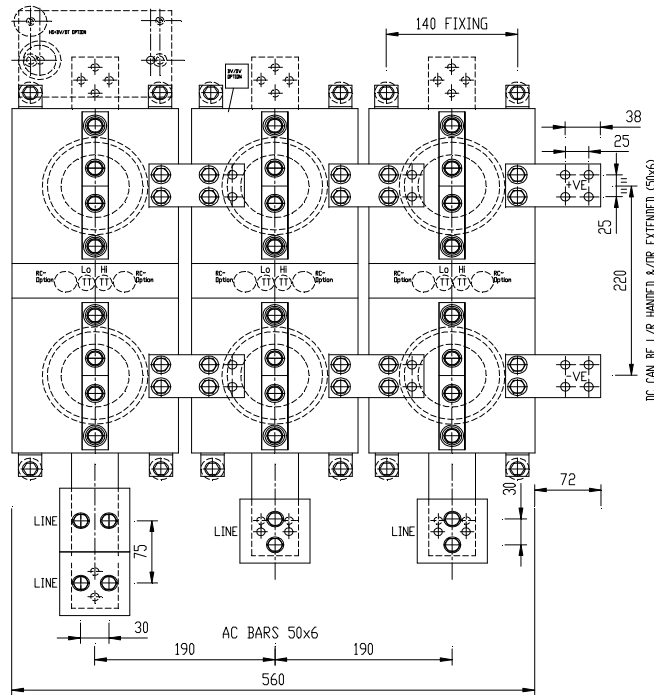


PHASES MAY BE SUPPLIED LOOSE FOR TRANSPORTATION.
CUSTOMER FITS DC LINKS & OUTPUTS.

MOUNTING & CONNECTION HOLES M8, M8 CLEAR
G/K LEADS 600mm
FUSES, Dv/Dt, TT ETC OPTIONAL.



FOR PARALLEL FUSES USE 180011C



FOR SINGLE BODY
FUSES USE 180011B

TOLERANCES UNLESS SPECIFIED
UNLIMITED DIMENSIONS TO BE ± 0.2
ANGLES $\pm 0^\circ - 30^\circ$
HOLES $+ 0.1 - 0.02$

REMOVE SHARP EDGES
ALL DIMENSIONS IN MILLIMETRES
CHAMFER ALL THREADS AT 45 TO
ROOT DIAMETER.

POWERSEM LTD OWNS THE COPYRIGHT OF THIS DRAWING WHICH IS
SUPPLIED IN CONFIDENCE AND WHICH MUST NOT BE USED FOR ANY PURPOSE OTHER THAN
THAT FOR WHICH IT IS SUPPLIED, AND MUST NOT BE REPRODUCED WITHOUT PERMISSION
IN WRITING FROM THE OWNERS.
© POWERSEM LTD.

TITLE: B6U/H/C PS257/400/180B

JOB: VAR

MAT'L:

SPEC.

FINISH:

SCALE 1:5

DRAWN PB

CHK'D MP

MDD. No

ISSUE No

1/22.03.98

DRG.No.B 020280

ASSEMBLY DN
ASSEMBLY DN

THIRD ANGLE PROJECTION

ASSEMBLY DN | PIKU ANGLE FRUJELILIN | ISSUE No | 1/22/03/98 | VALUE