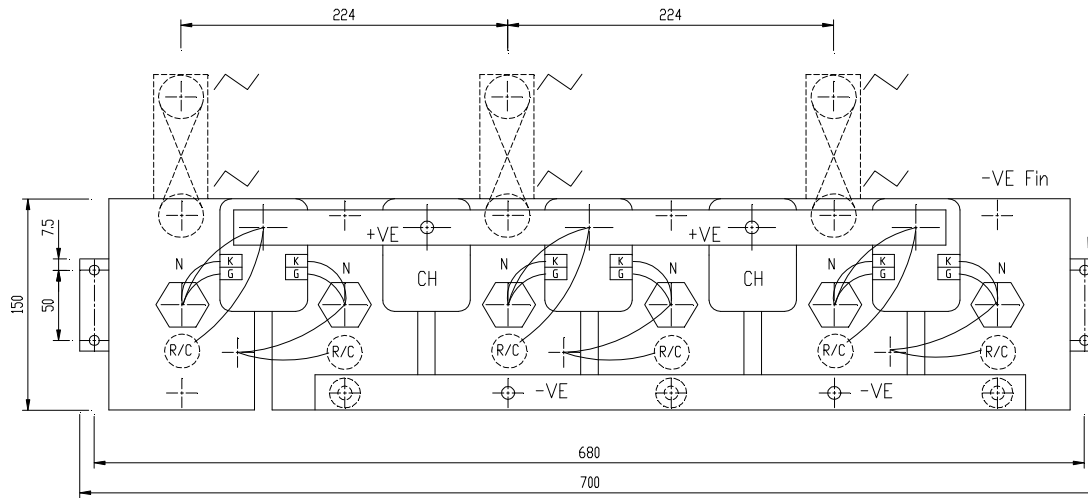
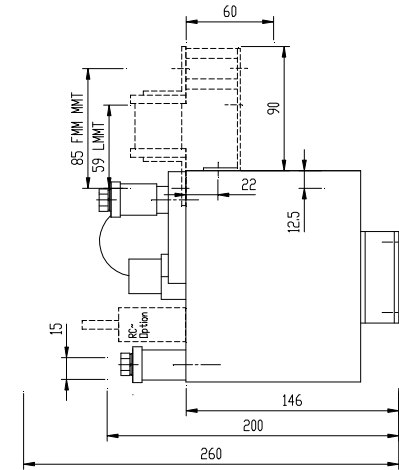


DRG.No.B 020674

POWERSEM LTD.



FIXINGS M6 CLEAR
 CONNECTIONS MB x 15 deep AC
 CONNECTIONS MB Clear DC
 BUSBARS 25x6mm WHERE FITTED.
 Optional Fittings :-
 Fuses Indicators & micros.
 Dv/Dt suppression.
 Thermal Trips.



TOLERANCES UNLESS SPECIFIED
 UNLIMITED DIMENSIONS TO BE ± 0.2
 ANGLES $\pm 0^\circ - 30^\circ$
 HOLES $+ 0.1 - 0.02$

REMOVE SHARP EDGES
 ALL DIMENSIONS IN MILLIMETRES
 CHAMFER ALL THREADS AT 45 TO
 ROOT DIAMETER.

POWERSEM LTD OWNS THE COPYRIGHT OF THIS DRAWING WHICH IS
 SUPPLIED IN CONFIDENCE AND WHICH MUST NOT BE USED FOR ANY PURPOSE OTHER THAN
 THAT FOR WHICH IT IS SUPPLIED, AND MUST NOT BE REPRODUCED WITHOUT PERMISSION
 IN WRITING FROM THE OWNERS. © POWERSEM LTD.

TITLE: B6C N xx/xx 6PS220/150B

JOB:

MAT'L:

SPEC.

FINISH:

SCALE 1:3

DRAWN PB

CHK'D MP

ASSEMBLY DN:
 ASSEMBLY DN

THIRD ANGLE PROJECTION

MD. No

ISSUE No

1/28.03.12

DRG.No.B 020674