

Distributed Gate Thyristors - Capsule Type

Westcode is recognised as the Worldwide leader in distributed gate technology. These devices are available with blocking voltages to 5.2kV and currents to 3kA, with t_f from 10 to 300 μ s. The unique distributed gate design and lifetime control features give these devices both high di/dt capability and fast, low recovery turn-off, while maintaining a low on-state voltage drop. Ideally suited to application including: induction heating, power supplied, high frequency inverters/converters, UPS and pulse power.

Type		V_{DRM} V_{RRM}	I_{TAV} $T_K=55^\circ C$	I_{TSM}	I^2t 10ms 1/2 sine $V_R \leq 60\% V_{RRM}$	t_q @ 200V/ μ s	Typ. Reverse Recovery Charge $T_{JM}, 50\%$ Chord			V_{T0}	r_T	T_{JM}	R_{thJK} 180° Sine	Fig. No.
Part No.	Old Part No.	V	A	A	A ² s	μ s	Q_{ra} μ C	@ I_{TM} A	@ -di/dt A/ μ s	@ T_{JM} V	m Ω	°C	K/W	
R0487YS10D	R210SH10	1000	487	4300	92.4×10^3	20	40	550	40	1.738	0.943	125	0.050	W9
R0487YS10E	R210SH10	1000	487	4300	92.4×10^3	25	40	550	40	1.738	0.943	125	0.050	W9
R0487YS10F	R210SH10	1000	487	4300	92.4×10^3	30	40	550	40	1.738	0.943	125	0.050	W9
R0487YS14D	R210SH14	1400	487	4300	92.4×10^3	20	40	550	40	1.738	0.943	125	0.050	W9
R0487YS14E	R210SH14	1400	487	4300	92.4×10^3	25	40	550	40	1.738	0.943	125	0.050	W9
R0487YS14F	R210SH14	1400	487	4300	92.4×10^3	30	40	550	40	1.738	0.943	125	0.050	W9
R0577YS08C	R185SH08	800	577	6000	180×10^3	15	85	550	40	1.510	0.640	125	0.050	W9
R0577YS08D	R185SH08	800	577	6000	180×10^3	20	85	550	40	1.510	0.640	125	0.050	W9
R0577YS08E	R185SH08	800	577	6000	180×10^3	25	85	550	40	1.510	0.640	125	0.050	W9
R0577YS12C	R185SH12	1200	577	6000	180×10^3	15	85	550	40	1.510	0.640	125	0.050	W9
R0577YS12D	R185SH12	1200	577	6000	180×10^3	20	85	550	40	1.510	0.640	125	0.050	W9
R0577YS12E	R185SH12	1200	577	6000	180×10^3	25	85	550	40	1.510	0.640	125	0.050	W9
R0633YS08D	R216SH08	800	633	6300	199×10^3	20	85	125	40	1.250	0.614	125	0.050	W9
R0633YS08E	R216SH08	800	633	6300	199×10^3	25	85	125	40	1.250	0.614	125	0.050	W9
R0633YS08F	R216SH08	800	633	6300	199×10^3	30	85	125	40	1.250	0.614	125	0.050	W9
R0633YS12D	R216SH12	1200	633	6300	199×10^3	20	85	125	40	1.250	0.612	125	0.050	W9
R0633YS12E	R216SH12	1200	633	6300	199×10^3	25	85	125	40	1.250	0.614	125	0.050	W9
R0633YS12F	R216SH12	1200	633	6300	199×10^3	30	85	125	40	1.250	0.614	125	0.050	W9
R0717LS14G	R181SH06	1400	717	7050	249×10^3	35	150	1000	60	1.752	0.732	125	0.032	W10a
R0717LS14H	R181SH06	1400	717	7050	249×10^3	40	150	1000	60	1.752	0.732	125	0.032	W10a
R0717LS14J	R181SH06	1400	717	7050	249×10^3	50	150	1000	60	1.752	0.732	125	0.032	W10a
R0717LS16G	R181SH10	1600	717	7050	249×10^3	35	150	1000	60	1.752	0.732	125	0.032	W10a
R0717LS16H	R181SH10	1600	717	7050	249×10^3	40	150	1000	60	1.752	0.732	125	0.032	W10a
R0717LS16J	R181SH10	1600	717	7050	249×10^3	50	150	1000	60	1.752	0.732	125	0.032	W10a
R0736LS20J	R175SH20	2000	736	6800	231×10^3	50	240	1000	60	1.842	0.619	125	0.032	W10a
R0736LS20K	R175SH20	2000	736	6800	231×10^3	60	240	1000	60	1.842	0.619	125	0.032	W10a
R0736LS20L	R175SH20	2000	736	6800	231×10^3	65	240	1000	60	1.842	0.619	125	0.032	W10a
R0736LS20M	R175SH20	2000	736	6800	231×10^3	70	240	1000	60	1.842	0.619	125	0.032	W10a
R0736LS25J	R175SH25	2500	736	6800	231×10^3	50	240	1000	60	1.842	0.619	125	0.032	W10a
R0736LS25K	R175SH25	2500	736	6800	231×10^3	60	240	1000	60	1.842	0.619	125	0.032	W10a
R0736LS25L	R175SH25	2500	736	6800	231×10^3	65	240	1000	60	1.842	0.619	125	0.032	W10a
R0736LS25M	R175SH25	2500	736	6800	231×10^3	70	240	1000	60	1.842	0.619	125	0.032	W10a

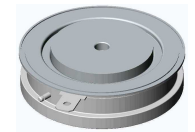


Figure W9 - 25mm - 90g



Figure W10a - 34mm - 340g

Type		V _{DRM} V _{RRM}	I _{TAV} T _K =55°C	I _{TSM}	I ² t 10ms ½ sine V _R ≤ 60% V _{RRM}	t _q @ 200V/μs	Typ. Reverse Recovery Charge T _{JM} , 50% Chord Q _{rra} @ I _{TM} @ -di/dt			V _{T0}	r _T	T _{JM}	R _{thJK} 180° Sine	Fig. No.
Part No.	Old Part No.	V	A	A	A ² s	μs	μC	A	A/μs	V	mΩ	°C	K/W	
R0809LS06A	R180SH06	600	809	8000	320 x 10 ³	10	50	1000	60	2.100	0.300	125	0.032	W10a
R0809LS06B	R180SH06	600	809	8000	320 x 10 ³	12	50	1000	60	2.100	0.300	125	0.032	W10a
R0809LS06C	R180SH06	600	809	8000	320 x 10 ³	15	50	1000	60	2.100	0.300	125	0.032	W10a
R0809LS10A	R180SH10	1000	809	8000	320 x 10 ³	10	50	1000	60	2.100	0.300	125	0.032	W10a
R0809LS10B	R180SH10	1000	809	8000	320 x 10 ³	12	50	1000	60	2.100	0.300	125	0.032	W10a
R0809LS10C	R180SH10	1000	809	8000	320 x 10 ³	15	50	1000	60	2.100	0.300	125	0.032	W10a
R0830LS10D	R190SH10	1000	830	8500	361 x 10 ³	20	110	1000	60	1.900	0.357	125	0.032	W10a
R0830LS10E	R190SH10	1000	830	8500	361 x 10 ³	25	110	1000	60	1.900	0.357	125	0.032	W10a
R0830LS10F	R190SH10	1000	830	8500	361 x 10 ³	30	110	1000	60	1.900	0.357	125	0.032	W10a
R0830LS10G	R190SH10	1000	830	8500	361 x 10 ³	35	110	1000	60	1.900	0.357	125	0.032	W10a
R0830LS14D	R190SH14	1400	830	8500	361 x 10 ³	20	110	1000	60	1.900	0.357	125	0.032	W10a
R0830LS14E	R190SH14	1400	830	8500	361 x 10 ³	25	110	1000	60	1.900	0.357	125	0.032	W10a
R0830LS14F	R190SH14	1400	830	8500	361 x 10 ³	30	110	1000	60	1.900	0.357	125	0.032	W10a
R0830LS14G	R190SH14	1400	830	8500	361 x 10 ³	35	110	1000	60	1.900	0.357	125	0.032	W10a
R0878LS14K	R200SH16	1600	878	7500	281 x 10 ³	60	350	1000	60	1.447	0.480	125	0.032	W10a
R0878LS14M	R200SH16	1600	878	7500	281 x 10 ³	70	350	1000	60	1.447	0.480	125	0.032	W10a
R0878LS18K	R200SH18	1800	878	7500	281 x 10 ³	60	350	1000	60	1.447	0.480	125	0.032	W10a
R0878LS18M	R200SH18	1800	878	7500	281 x 10 ³	70	350	1000	60	1.447	0.480	125	0.032	W10a
R0878LS21K	R200SH21	2100	878	7500	281 x 10 ³	60	350	1000	60	1.447	0.480	125	0.032	W10a
R0878LS21M	R200SH21	2100	878	7500	281 x 10 ³	70	350	1000	60	1.447	0.480	125	0.032	W10a
R0929LS08C	R219SH08	800	929	9000	405 x 10 ³	15	85	1000	60	1.549	0.350	125	0.032	W10a
R0929LS08D	R219SH08	800	929	9000	405 x 10 ³	20	85	1000	60	1.549	0.350	125	0.032	W10a
R0929LS08E	R219SH08	800	929	9000	405 x 10 ³	25	85	1000	60	1.549	0.350	125	0.032	W10a
R0929LS12C	R219SH12	1200	929	9000	405 x 10 ³	15	85	1000	60	1.549	0.350	125	0.032	W10a
R0929LS12D	R219SH12	1200	929	9000	405 x 10 ³	20	85	1000	60	1.549	0.350	125	0.032	W10a
R0929LS12E	R219SH12	1200	929	9000	405 x 10 ³	25	85	1000	60	1.549	0.350	125	0.032	W10a
R0964LS08D	R220SH08	800	964	9400	442 x 10 ³	20	75	1000	60	1.530	0.309	125	0.032	W10a
R0964LS08E	R220SH08	800	964	9400	442 x 10 ³	25	75	1000	60	1.530	0.309	125	0.032	W10a
R0964LS08F	R220SH08	800	964	9400	442 x 10 ³	30	75	1000	60	1.530	0.309	125	0.032	W10a
R0964LS12D	R220SH12	1200	964	9400	442 x 10 ³	20	75	1000	60	1.530	0.309	125	0.032	W10a
R0964LS12E	R220SH12	1200	964	9400	442 x 10 ³	25	75	1000	60	1.530	0.309	125	0.032	W10a
R0964LS12F	R220SH12	1200	964	9400	442 x 10 ³	30	75	1000	60	1.530	0.309	125	0.032	W10a
R0990LS04A	R270SH08	800	990	11000	605 x 10 ³	10	40	1000	60	1.350	0.350	125	0.032	W10a
R0990LS04B	R270SH08	800	990	11000	605 x 10 ³	12	40	1000	60	1.350	0.350	125	0.032	W10a
R0990LS04C	R270SH08	800	990	11000	605 x 10 ³	15	40	1000	60	1.350	0.350	125	0.032	W10a
R0990LS08A	R270SH12	1200	990	11000	605 x 10 ³	10	40	1000	60	1.350	0.350	125	0.032	W10a
R0990LS08B	R270SH12	1200	990	11000	605 x 10 ³	12	40	1000	60	1.350	0.350	125	0.032	W10a
R0990LS08C	R270SH12	1200	990	11000	605 x 10 ³	15	40	1000	60	1.350	0.350	125	0.032	W10a

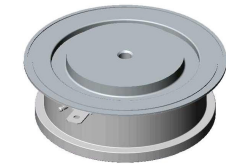


Figure W10a - 34mm - 340g

Type		V _{DRM} V _{RRM}	I _{TAV} T _K =55°C	I _{TSM}	I ² t 10ms ½ sine V _R ≤60% V _{RRM}	t _q @ 200V/μs	Typ. Reverse Recovery Charge T _{JM} , 50% Chord Q _{rra} @I _{TM} @-di/dt			V _{T0}	r _T	T _{JM}	R _{thJK} 180° Sine	Fig. No.
Part No.	Old Part No.	V	A	A	A ² s	μs	μC	A	A/μs	V	mΩ	°C	K/W	
R1124NS14K	R305SH14	1400	1124	13500	911 × 10 ³	60	400	1000	60	1.540	0.379	125	0.024	W11a
R1124NS14M	R305SH14	1400	1124	13500	911 × 10 ³	70	400	1000	60	1.540	0.379	125	0.024	W11a
R1124NS18K	R305SH18	1800	1124	13500	911 × 10 ³	60	400	1000	60	1.540	0.379	125	0.024	W11a
R1124NS18M	R305SH18	1800	1124	13500	911 × 10 ³	70	400	1000	60	1.540	0.379	125	0.024	W11a
R1124NS21K	R305SH21	2100†	1124	13500	911 × 10 ³	60	400	1000	60	1.540	0.379	125	0.024	W11a
R1124NS21M	R305SH21	2100†	1124	13500	911 × 10 ³	70	400	1000	60	1.540	0.379	125	0.024	W11a
R1127NC32R	D315CH32	3200	1127	12800	819 × 10 ³	140	1500	1000	60	1.500	0.474	125	0.022	W11
R1127NC32S	D315CH32	3200	1127	12800	819 × 10 ³	160	1500	1000	60	1.500	0.474	125	0.022	W11
R1127NC32T	D315CH32	3200	1127	12800	819 × 10 ³	200	1500	1000	60	1.500	0.474	125	0.022	W11
R1127NC36R	D315CH36	3600	1127	12800	819 × 10 ³	140	1500	1000	60	1.500	0.474	125	0.022	W11
R1127NC36S	D315CH36	3600	1127	12800	819 × 10 ³	160	1500	1000	60	1.500	0.474	125	0.022	W11
R1127NC36T	D315CH36	3600	1127	12800	819 × 10 ³	200	1500	1000	60	1.500	0.474	125	0.022	W11
R1158NS24N	D350SH24	2400	1158	14500	1.05 × 10 ⁶	100	900	1000	60	1.600	0.400	125	0.022	W11a
R1158NS24P	D350SH24	2400	1158	14500	1.05 × 10 ⁶	120	900	1000	60	1.600	0.400	125	0.022	W11a
R1158NS26N	D350SH26	2600	1158	14500	1.05 × 10 ⁶	100	900	1000	60	1.600	0.400	125	0.022	W11a
R1158NS26P	D350SH26	2600	1158	14500	1.05 × 10 ⁶	120	900	1000	60	1.600	0.400	125	0.022	W11a
R1178NS10E	R325SH10	1000	1178	17000	1.45 × 10 ⁶	25	170	1000	60	1.600	0.300	125	0.024	W11a
R1178NS10F	R325SH10	1000	1178	17000	1.45 × 10 ⁶	30	170	1000	60	1.600	0.300	125	0.024	W11a
R1178NS10G	R325SH10	1000	1178	17000	1.45 × 10 ⁶	35	170	1000	60	1.600	0.300	125	0.024	W11a
R1178NS14E	R325SH14	1400	1178	17000	1.45 × 10 ⁶	25	170	1000	60	1.600	0.300	125	0.024	W11a
R1178NS14F	R325SH14	1400	1178	17000	1.45 × 10 ⁶	30	170	1000	60	1.600	0.300	125	0.024	W11a
R1178NS14G	R325SH14	1400	1178	17000	1.45 × 10 ⁶	35	170	1000	60	1.600	0.300	125	0.024	W11a
R1211NS08D	R350SH08	800	1211	17600	1.55 × 10 ⁶	20	100	1000	60	1.720	0.230	125	0.024	W11a
R1211NS08E	R350SH08	800	1211	17600	1.55 × 10 ⁶	25	100	1000	60	1.720	0.230	125	0.024	W11a
R1211NS12D	R350SH12	1200	1211	17600	1.55 × 10 ⁶	20	100	1000	60	1.720	0.230	125	0.024	W11a
R1211NS12E	R350SH12	1200	1211	17600	1.55 × 10 ⁶	25	100	1000	60	1.720	0.230	125	0.024	W11a
R1271NS08D	R355SH08	800	1271	18000	1.62 × 10 ⁶	20	120	1000	60	1.550	0.236	125	0.024	W11a
R1271NS08E	R355SH08	800	1271	18000	1.62 × 10 ⁶	25	120	1000	60	1.550	0.236	125	0.024	W11a
R1271NS08G	R355SH08	800	1271	18000	1.62 × 10 ⁶	35	120	1000	60	1.550	0.236	125	0.024	W11a
R1271NS12D	R355SH12	1200	1271	18000	1.62 × 10 ⁶	20	120	1000	60	1.550	0.236	125	0.024	W11a
R1271NS12E	R355SH12	1200	1271	18000	1.62 × 10 ⁶	25	120	1000	60	1.550	0.236	125	0.024	W11a
R1271NS12G	R355SH12	1200	1271	18000	1.62 × 10 ⁶	35	120	1000	60	1.550	0.236	125	0.024	W11a
R1275NS14L	R395SH14	1400	1275	15500	1.20 × 10 ⁶	65	420	1000	60	1.207	0.342	125	0.024	W11a
R1275NS14M	R395SH14	1400	1275	15500	1.20 × 10 ⁶	70	420	1000	60	1.207	0.342	125	0.024	W11a
R1275NS18L	R395SH18	1800	1275	15500	1.20 × 10 ⁶	65	420	1000	60	1.207	0.342	125	0.024	W11a
R1275NS18M	R395SH18	1800	1275	15500	1.20 × 10 ⁶	70	420	1000	60	1.207	0.342	125	0.024	W11a
R1275NS21L	R395SH21	2100†	1275	15500	1.20 × 10 ⁶	65	420	1000	60	1.207	0.342	125	0.024	W11a
R1275NS21M	R395SH21	2100†	1275	15500	1.20 × 10 ⁶	70	420	1000	60	1.207	0.342	125	0.024	W11a



Figure W11 - 47mm - 510g



Figure W11a - 47mm - 510g

† Denotes V_{RRM} 1800V max.

Type		V _{DRM} V _{RRM}	I _{TAV} T _K =55°C	I _{TSM}	I ² t 10ms ½ sine V _R ≤60% V _{RRM}	t _q @ 200V/μs	Typ. Reverse Recovery Charge T _{JM} , 50% Chord Q _{rr} @I _{TM} @-di/dt			V _{T0}	r _T	T _{JM}	R _{thJK} 180° Sine	Fig. No.
Part No.	Old Part No.	V	A	A	A ² s	μs	μC	A	A/μs	V	mΩ	°C	K/W	
R1279NS22J	D391SH22	2200	1279	14800	1.10 x 10 ⁶	50	700	1000	60	1.440	0.330	125	0.022	W11a
R1279NS22K	D391SH22	2200	1279	14800	1.10 x 10 ⁶	60	700	1000	60	1.440	0.330	125	0.022	W11a
R1279NS22M	D391SH22	2200	1279	14800	1.10 x 10 ⁶	70	700	1000	60	1.440	0.330	125	0.022	W11a
R1279NS25J	D391SH25	2500	1279	14800	1.10 x 10 ⁶	50	700	1000	60	1.440	0.330	125	0.022	W11a
R1279NS25K	D391SH25	2500	1279	14800	1.10 x 10 ⁶	60	700	1000	60	1.440	0.330	125	0.022	W11a
R1279NS25M	D391SH25	2500	1279	14800	1.10 x 10 ⁶	70	700	1000	60	1.440	0.330	125	0.022	W11a
R1280NS18J	D390SH18	1800	1280	14800	1.10 x 10 ⁶	50	600	1000	60	1.440	0.330	125	0.022	W11a
R1280NS18K	D390SH18	1800	1280	14800	1.10 x 10 ⁶	60	600	1000	60	1.440	0.330	125	0.022	W11a
R1280NS18M	D390SH18	1800	1280	14800	1.10 x 10 ⁶	70	600	1000	60	1.440	0.330	125	0.022	W11a
R1280NS21J	D390SH21	2100	1280	14800	1.10 x 10 ⁶	50	600	1000	60	1.440	0.330	125	0.022	W11a
R1280NS21K	D390SH21	2100	1280	14800	1.10 x 10 ⁶	60	600	1000	60	1.440	0.330	125	0.022	W11a
R1280NS21M	D390SH21	2100	1280	14800	1.10 x 10 ⁶	70	600	1000	60	1.440	0.330	125	0.022	W11a
R1280NS25J	D390SH25	2500	1280	14800	1.10 x 10 ⁶	50	600	1000	60	1.440	0.330	125	0.022	W11a
R1280NS25K	D390SH25	2500	1280	14800	1.10 x 10 ⁶	60	600	1000	60	1.440	0.330	125	0.022	W11a
R1280NS25M	D390SH25	2500	1280	14800	1.10 x 10 ⁶	70	600	1000	60	1.440	0.330	125	0.022	W11a
R1331NS10B	D450SH10	1000	1331	18200	1.66 x 10 ⁶	12	80	1000	60	1.450	0.285	125	0.022	W11a
R1331NS10C	D450SH10	1000	1331	18200	1.66 x 10 ⁶	15	80	1000	60	1.450	0.285	125	0.022	W11a
R1331NS10D	D450SH10	1000	1331	18200	1.66 x 10 ⁶	20	80	1000	60	1.450	0.285	125	0.022	W11a
R1331NS12B	D450SH12	1200	1331	18200	1.66 x 10 ⁶	12	80	1000	60	1.450	0.285	125	0.022	W11a
R1331NS12C	D450SH12	1200	1331	18200	1.66 x 10 ⁶	15	80	1000	60	1.450	0.285	125	0.022	W11a
R1331NS12D	D450SH12	1200	1331	18200	1.66 x 10 ⁶	20	80	1000	60	1.450	0.285	125	0.022	W11a
R1446NS08E	R400SH08	800	1446	19500	1.90 x 10 ⁶	25	120	1000	60	1.304	0.200	125	0.024	W11a
R1446NS08F	R400SH08	800	1446	19500	1.90 x 10 ⁶	30	120	1000	60	1.304	0.200	125	0.024	W11a
R1446NS08G	R400SH08	800	1446	19500	1.90 x 10 ⁶	35	120	1000	60	1.304	0.200	125	0.024	W11a
R1446NS12E	R400SH12	1200	1446	19500	1.90 x 10 ⁶	25	120	1000	60	1.304	0.200	125	0.024	W11a
R1446NS12F	R400SH12	1200	1446	19500	1.90 x 10 ⁶	30	120	1000	60	1.304	0.200	125	0.024	W11a
R1446NS12G	R400SH12	1200	1446	19500	1.90 x 10 ⁶	35	120	1000	60	1.304	0.200	125	0.024	W11a
R1448NS14H	D405SH14	1400	1448	15500	1.20 x 10 ⁶	40	500	1000	60	1.350	0.250	125	0.022	W11a
R1448NS14J	D405SH14	1400	1448	15500	1.20 x 10 ⁶	50	500	1000	60	1.350	0.250	125	0.022	W11a
R1448NS14L	D405SH14	1400	1448	15500	1.20 x 10 ⁶	65	500	1000	60	1.350	0.250	125	0.022	W11a
R1448NS18H	D405SH18	1800	1448	15500	1.20 x 10 ⁶	40	500	1000	60	1.350	0.250	125	0.022	W11a
R1448NS18J	D405SH18	1800	1448	15500	1.20 x 10 ⁶	50	500	1000	60	1.350	0.250	125	0.022	W11a
R1448NS18L	D405SH18	1800	1448	15500	1.20 x 10 ⁶	65	500	1000	60	1.350	0.250	125	0.022	W11a
R1448NS20H	N/A	2000	1448	15500	1.20 x 10 ⁶	40	500	1000	60	1.350	0.250	125	0.022	W11a
R1448NS20J	N/A	2000	1448	15500	1.20 x 10 ⁶	50	500	1000	60	1.350	0.250	125	0.022	W11a
R1448NS20L	N/A	2000	1448	15500	1.20 x 10 ⁶	65	500	1000	60	1.350	0.250	125	0.022	W11a

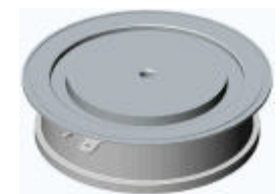


Figure W11a - 47mm - 510g

Type		V _{DRM} V _{RRM}	I _{TAV} T _K =55°C	I _{TSM}	I ² t 10ms ½ sine V _R ≤60% V _{RRM}	t _q @ 200V/μs	Typ. Reverse Recovery Charge T _{JM} , 50% Chord Q _{rr} @I _{TM} @-di/dt			V _{T0}	r _T	T _{JM}	R _{thJK} 180° Sine	Fig. No.
Part No.	Old Part No.	V	A	A	A ² s	μs	μC	A	A/μs	V	mΩ	°C	K/W	
R2475ZC20N	R500CH20	2000	2475	31000	4.81 x 10 ⁶	100	1700	4000	60	1.504	0.174	125	0.011	W13
R2475ZC28N	R500CH28	2800	2475	31000	4.81 x 10 ⁶	100	1700	4000	60	1.504	0.174	125	0.011	W13
R2475ZD20N	R500DH20	2000	2475	31000	4.81 x 10 ⁶	100	1700	4000	60	1.504	0.174	125	0.011	W46
R2475ZD28N	R500DH28	2800	2475	31000	4.81 x 10 ⁶	100	1700	4000	60	1.504	0.174	125	0.011	W46
R2619ZC18J	R600CH18	1800	2619	33800	5.71 x 10 ⁶	50	1100	4000	60	1.308	0.173	125	0.011	W13
R2619ZC18K	R600CH18	1800	2619	33800	5.71 x 10 ⁶	60	1100	4000	60	1.308	0.173	125	0.011	W13
R2619ZC18L	R600CH18	1800	2619	33800	5.71 x 10 ⁶	65	1100	4000	60	1.308	0.173	125	0.011	W13
R2619ZC21J	R600CH21	2100†	2619	33800	5.71 x 10 ⁶	50	1100	4000	60	1.308	0.173	125	0.011	W13
R2619ZC21K	R600CH21	2100†	2619	33800	5.71 x 10 ⁶	60	1100	4000	60	1.308	0.173	125	0.011	W13
R2619ZC21L	R600CH21	2100†	2619	33800	5.71 x 10 ⁶	65	1100	4000	60	1.308	0.173	125	0.011	W13
R2619ZC25J	R600CH25	2500†	2619	33800	5.71 x 10 ⁶	50	1100	4000	60	1.308	0.173	125	0.011	W13
R2619ZC25K	R600CH25	2500†	2619	33800	5.71 x 10 ⁶	60	1100	4000	60	1.308	0.173	125	0.011	W13
R2619ZC25L	R600CH25	2500†	2619	33800	5.71 x 10 ⁶	65	1100	4000	60	1.308	0.173	125	0.011	W13
R2619ZD18J	N/A	1800	2619	33800	5.71 x 10 ⁶	50	1100	4000	60	1.308	0.173	125	0.011	W46
R2619ZD18K	N/A	1800	2619	33800	5.71 x 10 ⁶	60	1100	4000	60	1.308	0.173	125	0.011	W46
R2619ZD18L	N/A	1800	2619	33800	5.71 x 10 ⁶	65	1100	4000	60	1.308	0.173	125	0.011	W46
R2619ZD21J	N/A	2100†	2619	33800	5.71 x 10 ⁶	50	1100	4000	60	1.308	0.173	125	0.011	W46
R2619ZD21K	N/A	2100†	2619	33800	5.71 x 10 ⁶	60	1100	4000	60	1.308	0.173	125	0.011	W46
R2619ZD21L	N/A	2100†	2619	33800	5.71 x 10 ⁶	65	1100	4000	60	1.308	0.173	125	0.011	W46
R2619ZD25J	N/A	2500†	2619	33800	5.71 x 10 ⁶	50	1100	4000	60	1.308	0.173	125	0.011	W46
R2619ZD25K	N/A	2500†	2619	33800	5.71 x 10 ⁶	60	1100	4000	60	1.308	0.173	125	0.011	W46
R2619ZD25L	N/A	2500†	2619	33800	5.71 x 10 ⁶	65	1100	4000	60	1.308	0.173	125	0.011	W46
R2620ZC22J	R610CH22	2200	2620	33800	5.71 x 10 ⁶	50	1200	4000	60	1.500	0.143	125	0.011	W13
R2620ZC22K	R610CH22	2200	2620	33800	5.71 x 10 ⁶	60	1200	4000	60	1.500	0.143	125	0.011	W13
R2620ZC22L	R610CH22	2200	2620	33800	5.71 x 10 ⁶	65	1200	4000	60	1.500	0.143	125	0.011	W13
R2620ZC25J	R610CH25	2500	2620	33800	5.71 x 10 ⁶	50	1200	4000	60	1.500	0.143	125	0.011	W13
R2620ZC25K	R610CH25	2500	2620	33800	5.71 x 10 ⁶	60	1200	4000	60	1.500	0.143	125	0.011	W13
R2620ZC25L	R610CH25	2500	2620	33800	5.71 x 10 ⁶	65	1200	4000	60	1.500	0.143	125	0.011	W13
R2620ZD22J	N/A	2200	2620	33800	5.71 x 10 ⁶	50	1200	4000	60	1.500	0.143	125	0.011	W46
R2620ZD22K	N/A	2200	2620	33800	5.71 x 10 ⁶	60	1200	4000	60	1.500	0.143	125	0.011	W46
R2620ZD22L	N/A	2200	2620	33800	5.71 x 10 ⁶	65	1200	4000	60	1.500	0.143	125	0.011	W46
R2620ZD25J	N/A	2500	2620	33800	5.71 x 10 ⁶	50	1200	4000	60	1.500	0.143	125	0.011	W46
R2620ZD25K	N/A	2500	2620	33800	5.71 x 10 ⁶	60	1200	4000	60	1.500	0.143	125	0.011	W46
R2620ZD25L	N/A	2500	2620	33800	5.71 x 10 ⁶	65	1200	4000	60	1.500	0.143	125	0.011	W46



Figure W13 - 73mm - 1700g



Figure W46 - 73mm - 1200g

† Denotes V_{RRM} 1800V max.

Type		V _{DRM} V _{RRM}	I _{TAV} T _K =55°C	I _{TSM}	I ² t 10ms ½ sine V _R ≤60% V _{RRM}	t _q @ 200V/μs	Typ. Reverse Recovery Charge T _{JM} , 50% Chord Q _{rr} @I _{TM} @-di/dt			V _{T0}	r _T	T _{JM}	R _{thJK} 180° Sine	Fig. No.
Part No.	Old Part No.	V	A	A	A ² s	μs	μC	A	A/μs	V	mΩ	°C	K/W	
R2714ZC16H	R800CH16	1600	2714	35600	6.34 x 10 ⁶	40	700	4000	60	1.250	0.163	125	0.011	W13
R2714ZC16J	R800CH16	1600	2714	35600	6.34 x 10 ⁶	50	700	4000	60	1.250	0.163	125	0.011	W13
R2714ZC16K	R800CH16	1600	2714	35600	6.34 x 10 ⁶	60	700	4000	60	1.250	0.163	125	0.011	W13
R2714ZC18H	R800CH18	1800	2714	35600	6.34 x 10 ⁶	40	700	4000	60	1.250	0.163	125	0.011	W13
R2714ZC18J	R800CH18	1800	2714	35600	6.34 x 10 ⁶	50	700	4000	60	1.250	0.163	125	0.011	W13
R2714ZC18K	R800CH18	1800	2714	35600	6.34 x 10 ⁶	60	700	4000	60	1.250	0.163	125	0.011	W13
R2714ZD16H	N/A	1600	2714	35600	6.34 x 10 ⁶	40	700	4000	60	1.250	0.163	125	0.011	W46
R2714ZD16J	N/A	1600	2714	35600	6.34 x 10 ⁶	50	700	4000	60	1.250	0.163	125	0.011	W46
R2714ZD16K	N/A	1600	2714	35600	6.34 x 10 ⁶	60	700	4000	60	1.250	0.163	125	0.011	W46
R2714ZD18H	N/A	1800	2714	35600	6.34 x 10 ⁶	40	700	4000	60	1.250	0.163	125	0.011	W46
R2714ZD18J	N/A	1800	2714	35600	6.34 x 10 ⁶	50	700	4000	60	1.250	0.163	125	0.011	W46
R2714ZD18K	N/A	1800	2714	35600	6.34 x 10 ⁶	60	700	4000	60	1.250	0.163	125	0.011	W46
R3047TC24N	R1863CH24	2400	3047	50000	12.5 x 10 ⁶	100	1400	4000	60	1.580	0.170	125	0.008	W14
R3047TC24R	R1863CH24	2400	3047	50000	12.5 x 10 ⁶	140	1400	4000	60	1.580	0.170	125	0.008	W14
R3047TC24T	R1863CH24	2400	3047	50000	12.5 x 10 ⁶	200	1400	4000	60	1.580	0.170	125	0.008	W14
R3047TC28N	R1863CH28	2800	3047	50000	12.5 x 10 ⁶	100	1400	4000	60	1.580	0.170	125	0.008	W14
R3047TC28R	R1863CH28	2800	3047	50000	12.5 x 10 ⁶	140	1400	4000	60	1.580	0.170	125	0.008	W14
R3047TC28T	R1863CH28	2800	3047	50000	12.5 x 10 ⁶	200	1400	4000	60	1.580	0.170	125	0.008	W14
R3047TD24N	R1863DH24	2400	3047	50000	12.5 x 10 ⁶	100	1400	4000	60	1.580	0.170	125	0.008	W19
R3047TD24R	R1863DH24	2400	3047	50000	12.5 x 10 ⁶	140	1400	4000	60	1.580	0.170	125	0.008	W19
R3047TD24T	R1863DH24	2400	3047	50000	12.5 x 10 ⁶	200	1400	4000	60	1.580	0.170	125	0.008	W19
R3047TD28N	R1863DH28	2800	3047	50000	12.5 x 10 ⁶	100	1400	4000	60	1.580	0.170	125	0.008	W19
R3047TD28R	R1863DH28	2800	3047	50000	12.5 x 10 ⁶	140	1400	4000	60	1.580	0.170	125	0.008	W19
R3047TD28T	R1863DH28	2800	3047	50000	12.5 x 10 ⁶	200	1400	4000	60	1.580	0.170	125	0.008	W19
R3370ZC10C	R1200CH10	1000	3370	43900	9.64 x 10 ⁶	15	240	4000	60	1.353	0.064	125	0.011	W13
R3370ZC10D	R1200CH10	1000	3370	43900	9.64 x 10 ⁶	20	240	4000	60	1.353	0.064	125	0.011	W13
R3370ZC10E	R1200CH10	1000	3370	43900	9.64 x 10 ⁶	25	240	4000	60	1.353	0.064	125	0.011	W13
R3370ZC12C	R1200CH12	1200	3370	43900	9.64 x 10 ⁶	15	240	4000	60	1.353	0.064	125	0.011	W13
R3370ZC12D	R1200CH12	1200	3370	43900	9.64 x 10 ⁶	20	240	4000	60	1.353	0.064	125	0.011	W13
R3370ZC12E	R1200CH12	1200	3370	43900	9.64 x 10 ⁶	25	240	4000	60	1.353	0.064	125	0.011	W13
R3370ZD10C	N/A	1000	3370	43900	9.64 x 10 ⁶	15	240	4000	60	1.353	0.064	125	0.011	W46
R3370ZD10D	N/A	1000	3370	43900	9.64 x 10 ⁶	20	240	4000	60	1.353	0.064	125	0.011	W46
R3370ZD10E	N/A	1000	3370	43900	9.64 x 10 ⁶	25	240	4000	60	1.353	0.064	125	0.011	W46
R3370ZD12C	N/A	1200	3370	43900	9.64 x 10 ⁶	15	240	4000	60	1.353	0.064	125	0.011	W46
R3370ZD12D	N/A	1200	3370	43900	9.64 x 10 ⁶	20	240	4000	60	1.353	0.064	125	0.011	W46
R3370ZD12E	N/A	1200	3370	43900	9.64 x 10 ⁶	25	240	4000	60	1.353	0.064	125	0.011	W46



Figure W13 - 73mm - 1700g



Figure W46 - 73mm - 1200g



Figure W14 - 75mm - 1300g



Figure W19 - 75mm - 1700g

Type		V _{DRM} V _{RRM}	I _{TAV} T _K =55°C	I _{TSM}	I ² t 10ms ½ sine V _R ≤60% V _{RRM}	t _q @ 200V/μs	Typ. Reverse Recovery Charge T _{JM} , 50% Chord Q _{rra} @I _{TM} @-di/dt			V _{T0}	r _T	T _{JM}	R _{thJK} 180° Sine	Fig. No.
Part No.	Old Part No.	V	A	A	A ² s	μs	μC	A	A/μs	V	mΩ	°C	K/W	
R3559TC16K	R1966CH16	1600	3559	38900	7.57 x 10 ⁶	60	750	4000	60	1.173	0.155	125	0.008	W14
R3559TC16N	R1966CH16	1600	3559	38900	7.57 x 10 ⁶	100	750	4000	60	1.173	0.155	125	0.008	W14
R3559TC16R	R1966CH16	1600	3559	38900	7.57 x 10 ⁶	140	750	4000	60	1.173	0.155	125	0.008	W14
R3559TC16T	R1966CH16	1600	3559	38900	7.57 x 10 ⁶	200	750	4000	60	1.173	0.155	125	0.008	W14
R3559TC20K	R1966CH20	2000	3559	38900	7.57 x 10 ⁶	60	750	4000	60	1.173	0.155	125	0.008	W14
R3559TC20N	R1966CH20	2000	3559	38900	7.57 x 10 ⁶	100	750	4000	60	1.173	0.155	125	0.008	W14
R3559TC20R	R1966CH20	2000	3559	38900	7.57 x 10 ⁶	140	750	4000	60	1.173	0.155	125	0.008	W14
R3559TC20T	R1966CH20	2000	3559	38900	7.57 x 10 ⁶	200	750	4000	60	1.173	0.155	125	0.008	W14
R3559TD16K	R1966DH16	1600	3559	38900	7.57 x 10 ⁶	60	750	4000	60	1.173	0.155	125	0.008	W19
R3559TD16N	R1966DH16	1600	3559	38900	7.57 x 10 ⁶	100	750	4000	60	1.173	0.155	125	0.008	W19
R3559TD16R	R1966DH16	1600	3559	38900	7.57 x 10 ⁶	140	750	4000	60	1.173	0.155	125	0.008	W19
R3559TD16T	R1966DH16	1600	3559	38900	7.57 x 10 ⁶	200	750	4000	60	1.173	0.155	125	0.008	W19
R3559TD20K	R1966DH20	2000	3559	38900	7.57 x 10 ⁶	60	750	4000	60	1.173	0.155	125	0.008	W19
R3559TD20N	R1966DH20	2000	3559	38900	7.57 x 10 ⁶	100	750	4000	60	1.173	0.155	125	0.008	W19
R3559TD20R	R1966DH20	2000	3559	38900	7.57 x 10 ⁶	140	750	4000	60	1.173	0.155	125	0.008	W19
R3559TD20T	R1966DH20	2000	3559	38900	7.57 x 10 ⁶	200	750	4000	60	1.173	0.155	125	0.008	W19
R3708FC40V	R1386CH40	4000††	3708	50000	12.5 x 10 ⁶	250	4000	4000	60	1.473	0.156	125	0.0065	W15
R3708FC40W	R1386CH40	4000††	3708	50000	12.5 x 10 ⁶	300	4000	4000	60	1.473	0.156	125	0.0065	W15
R3708FC45V	R1386CH45	4500††	3708	50000	12.5 x 10 ⁶	250	4000	4000	60	1.473	0.156	125	0.0065	W15
R3708FC45W	R1386CH45	4500††	3708	50000	12.5 x 10 ⁶	300	4000	4000	60	1.473	0.156	125	0.0065	W15
R3708FD40V	N/A	4000††	3708	50000	12.5 x 10 ⁶	250	4000	4000	60	1.473	0.156	125	TBC	W48
R3708FD40W	N/A	4000††	3708	50000	12.5 x 10 ⁶	300	4000	4000	60	1.473	0.156	125	TBC	W48
R3708FD45V	N/A	4500††	3708	50000	12.5 x 10 ⁶	250	4000	4000	60	1.473	0.156	125	TBC	W48
R3708FD45W	N/A	4500††	3708	50000	12.5 x 10 ⁶	300	4000	4000	60	1.473	0.156	125	TBC	W48
Dev> RX075FC24R	N/A	2400	3814	64500	20.8x10 ⁶	140	1800	4000	60	1.568	0.133	125	0.0065	W15
Dev> RX075FC24T	N/A	2400	3814	64500	20.8x10 ⁶	200	1800	4000	60	1.568	0.133	125	0.0065	W15
Dev> RX075FC28R	N/A	2800	3814	64500	20.8x10 ⁶	140	1800	4000	60	1.568	0.133	125	0.0065	W15
Dev> RX075FC28T	N/A	2800	3814	64500	20.8x10 ⁶	200	1800	4000	60	1.568	0.133	125	0.0065	W15
Dev> RX075FD24R	N/A	2400	3814	64500	20.8x10 ⁶	140	1800	4000	60	1.568	0.133	125	TBC	W48
Dev> RX075FD24T	N/A	2400	3814	64500	20.8x10 ⁶	200	1800	4000	60	1.568	0.133	125	TBC	W48
Dev> RX075FD28R	N/A	2800	3814	64500	20.8x10 ⁶	140	1800	4000	60	1.568	0.133	125	TBC	W48
Dev> RX075FD28T	N/A	2800	3814	64500	20.8x10 ⁶	200	1800	4000	60	1.568	0.133	125	TBC	W48

†† Denotes V_{RRM} 3000V max.



Figure W14 - 75mm - 1300g



Figure W19 - 75mm - 1700g



Figure W15 - 99mm - 2800g



Figure W48 - 99mm - 1200g