

SINGLE PHASE HALF CONTROLLED AC REGULATORS

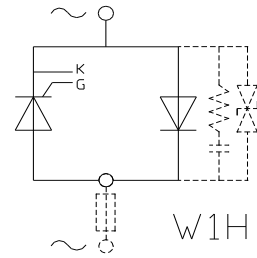
GD Rectifiers

QUALITY & SERVICE

OPTIONS **FITTED LINE FUSES, INDICATORS, MICRO SWITCHES.**
Dv/Dt SUPPRESSION
MOV OVER VOLTAGE SUPPRESSION
Hi/Lo THERMAL TRIPS

WATER COOLED OPTIONS.
HIGHER VOLTAGES
IP20 ENCLOSED
STANDBY FANS

TRIGGER CIRCUITS.
CONSULT FACTORY.



ISOLATED DEVICES

| DWG No | Max Output Cont Amps @ 30C | Max Output Cont Amps @ 40C | Cooling Mode | DEVICE I2T A2S *1000 @TVJ | DEVICE VRRM MAX | Height mm | Width mm | Depth mm | Weight KG |
|-------------|----------------------------|----------------------------|--------------|---------------------------|-----------------|-----------|----------|----------|-----------|
| W1H 020003 | 40 | 37 | NAC | 1.05 | 1600 | 150 | 96 | 80 | 0.8 |
| W1H 020003 | 55 | 50 | NAC | 9.1 | 1800 | 150 | 96 | 80 | 0.8 |
| W1H 020003 | 65 | 60 | NAC | 20 | 1800 | 150 | 96 | 80 | 0.8 |
| W1H 020005 | 100*/105 | 95 | NAC | 9.1 | 1800 | 180 | 125 | 180 | 3.2 |
| W1H 020005 | 140 | 130 | NAC | 20 | 1800 | 180 | 125 | 180 | 3.2 |
| W1H 020007 | 148 | 137 | FAC | 9.1 | 1800 | 230 | 125 | 180 | 4 |
| W1H 020013N | 190 | 170 | NAC | 137 | 1800 | 180 | 125 | 180 | 3.2 |
| W1H 020007 | 200*/212 | 196 | FAC | 20 | 1800 | 230 | 125 | 180 | 4 |
| W1H 020011N | 220 | 200 | NAC | 137 | 1800 | 300 | 125 | 180 | 5.5 |
| W1H 020015N | 300 | 270 | NAC | 320 | 1800 | 300 | 135 | 180 | 6 |
| W1H 020013 | 320 | 290 | FAC | 137 | 1800 | 230 | 125 | 180 | 4 |
| W1H 020011 | 350 | 325 | FAC | 137 | 1800 | 350 | 125 | 180 | 6.5 |
| W1H 021930 | 440 | 400 | NAC | 2800 | 1800 | 450 | 125 | 240 | 11 |
| W1H 020015 | 450 | 419 | FAC | 245 | 1600 | 350 | 135 | 180 | 7 |
| W1H 020015 | 500 | 465 | FAC | 304 | 1800 | 350 | 135 | 180 | 7 |
| W1H 020015 | 525 | 487 | FAC | 320 | 1800 | 350 | 135 | 180 | 7 |
| W1H 020021 | 650 | 620 | FAC | 320 | 1800 | 400 | 190 | 200 | 9.5 |
| W1H 020955 | 770 | 700 | FAC | 1050 | 1800 | 460 | 125 | 200 | 10.5 |
| W1H 020956 | 950 | 880 | FAC | 1050 | 1800 | 500 | 190 | 230 | 11.5 |
| W1H 020957 | 1125 | 1025 | FAC | 2800 | 1800 | 550 | 190 | 240 | 14 |

